



GMT MONTHLY MEMBERSHIP PROGRESS REPORT

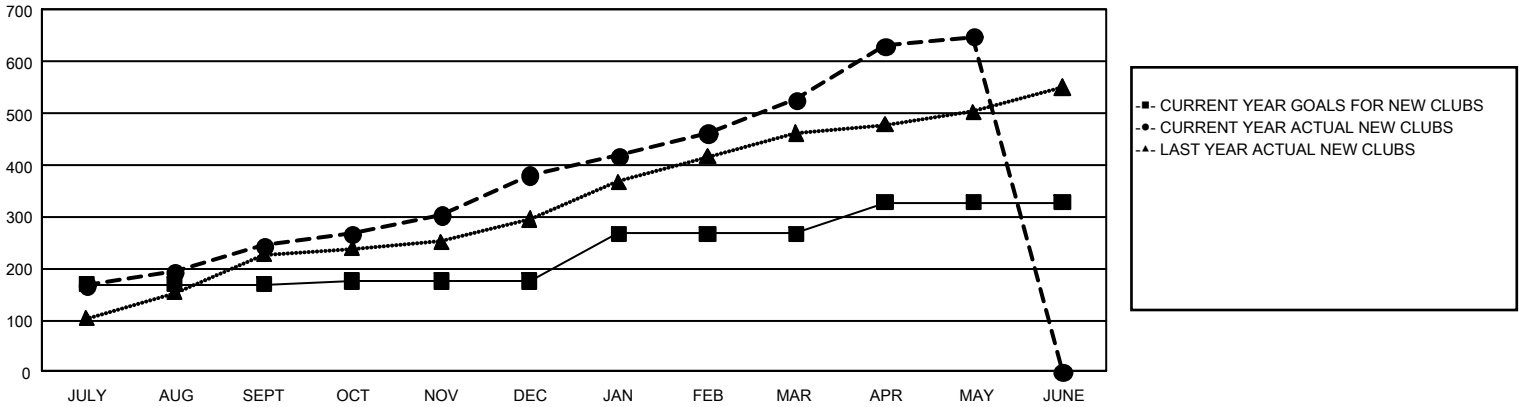
GAT Constitutional Area 6 - South Asia and Middle East

Results as of: 5/31/2026

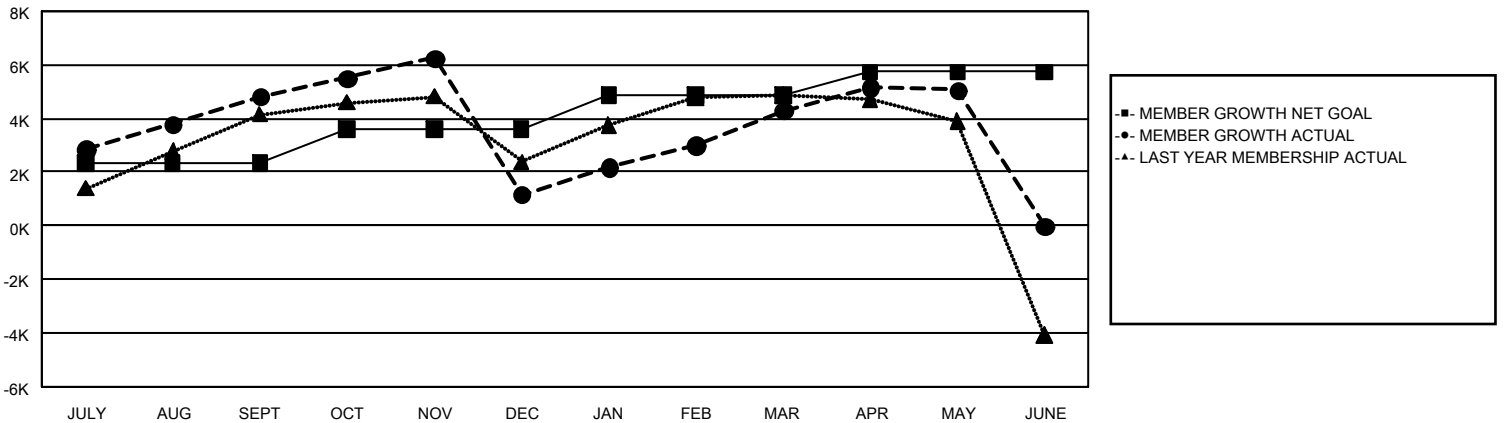
REPORT DOES NOT INCLUDE CLUBS IN UNDISTRICTED AREAS.

Clubs				Members			
RESULTS FOR 2025-2026				RESULTS FOR 2025-2026			
QUARTER	NEW CLUB GOAL	NEW CLUBS	DROPPED CLUBS	QUARTER	MEMBER GROWTH NET GOAL	MEMBER GROWTH ACTUAL	DROPPED MEMBERS ACTUAL (including transfers)
JULY/AUG/SEPT	169	244	50	JULY/AUG/SEPT	2,348	10,383	4,579
OCT/NOV/DEC	7	137	197	OCT/NOV/DEC	1,262	6,611	9,407
JAN/FEB/MAR	91	145	29	JAN/FEB/MAR	1,262	6,252	1,732
APR/MAY/JUNE	60	123	60	APR/MAY/JUNE	873	4,969	3,628

GOALS AND ACTUAL NEW CLUBS CUMULATIVE



GOALS AND ACTUAL MEMBERS CUMULATIVE



DROPPED CLUBS: 336	2,587 CLUBS OF 4,751 ADDED 1 OR MORE NEW MEMBERS	GENDER DISTRIBUTION MALE 68,930 (71.37%) FEMALE 27,589 (28.57%)
DROPPED MEMBERS DECEASED 84 CLUB CANCELLED 6,574 OTHER 12,605 <hr/> TOTAL 19,263	CLICK HERE FOR CUMULATIVE MEMBERSHIP DATA	TOTAL FAMILY UNIT MEMBERS 46,489 FAMILY MEMBERS PAYING HALF DUES 32,034